

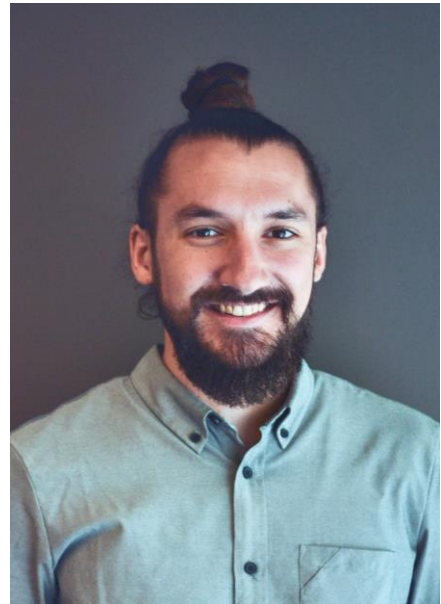


Tyler Smith

SENIOR PROJECT MANAGER

EDUCATION B.A.E., Architectural Engineering
Penn State University, 2008

EXPERTISE Building Envelope Design
Building Envelope Failure Investigations
Condition Assessments
Materials Testing
Heat / Vapor Transfer through Building Materials
Building Envelope Commissioning
SPRAT II Rope Access Technician



PROFESSIONAL SUMMARY

Mr. Smith joined BEE Consulting, LLC in June 2017 and currently serves as the Senior Project Manager for BEE's Portland, Oregon Office. As a Senior Project Manager, Mr. Smith's responsibilities include consulting on multiple projects that include building envelope design for commercial, residential and municipal construction.

Prior to Mr. Smith's employment at BEE, he spent 9 years as a Building Science Engineer for RDH where he focused on building enclosure consulting services related to new construction and existing buildings. During his tenure as a Building Science Engineer he performed new building design and construction risk review, building enclosure commissioning, condition assessments, forensic investigations, materials testing and litigation support.

In 2008, when he began his career at RDH, he started work in the maintenance and planning portion of the company where he wrote building maintenance manuals and reserve studies to assist building owners in planning for maintenance and replacement events and their associated costs throughout the life of the building. From there he shifted focus onto building enclosure condition assessments and forensic investigations, and in 2014, he moved into new construction consulting while continuing to do existing building investigations on the side.

Mr. Smith's qualifications includes:

- Dangerous access specialist (bosun's chair, swing stage, fall protection)
- SPRAT Level II Rope Access Technician (1,000+ hours of rope work logged)
- Certified equipment operator (boom lift, aerial work platforms and swing stage)